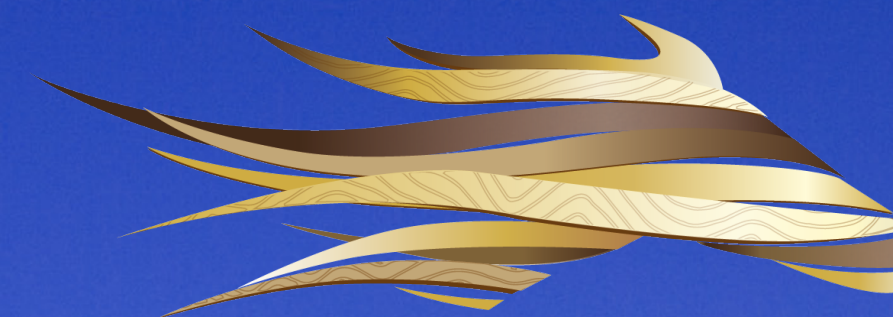


DOWN ROYAL

beyond the racecourse



Down Royal[™]
Racecourse



www.downroyal.com

WELCOME TO DOWN ROYAL RACECOURSE

Steeped in history, Down Royal Racecourse has brought the 'Sport of Kings' to generations of people in Ulster since the 17th Century and is proud to boast some of the most modern facilities for any activity within its grounds. Combine this sporting legacy with state-of-the-art spaces and you'll discover thriving entertainment both on and off the track with outstanding hospitality, delicious dining facilities and much more!

Our staff are passionate and dedicated to achieving excellence. We enjoy providing the highest standard of service and being part of fantastic events, whatever the size or style.

Down Royal Racecourse – the perfect choice for your next event.



EVENTS AT DOWN ROYAL

a venue for all

Down Royal Racecourse is a unique venue with modern internal spaces that can host from 10 to 500 attendees and vast open-air expanses with an external capacity of 7,000 people. The versatile and flexible spaces, all with natural daylight and enjoying views over the racecourse and/or surrounding countryside, ensure there is a size, style, and set-up to suit your needs.

From our large Shortcross Gin Suite accommodating 500 dinner guests with 7 break-out rooms, to acres of external grounds; we can create an event to your exact requirements. WIFI is available across the entire site and the suites are fitted with an internal PA system. Our spacious and versatile site allows our clients to be as creative as they wish. We have the space to bring any event to life – the options are limitless

Room hire is available for full day or half day rental, all year round.
Day Delegate Packages start from as little as £49.50 per person.

Conferences
Meetings
Gala Dinners
Weddings
Exhibitions

ROOMS AT A GLANCE

Down Royal Racecourse has a wide variety of spaces, offering all the flexibility and inspiration you need.

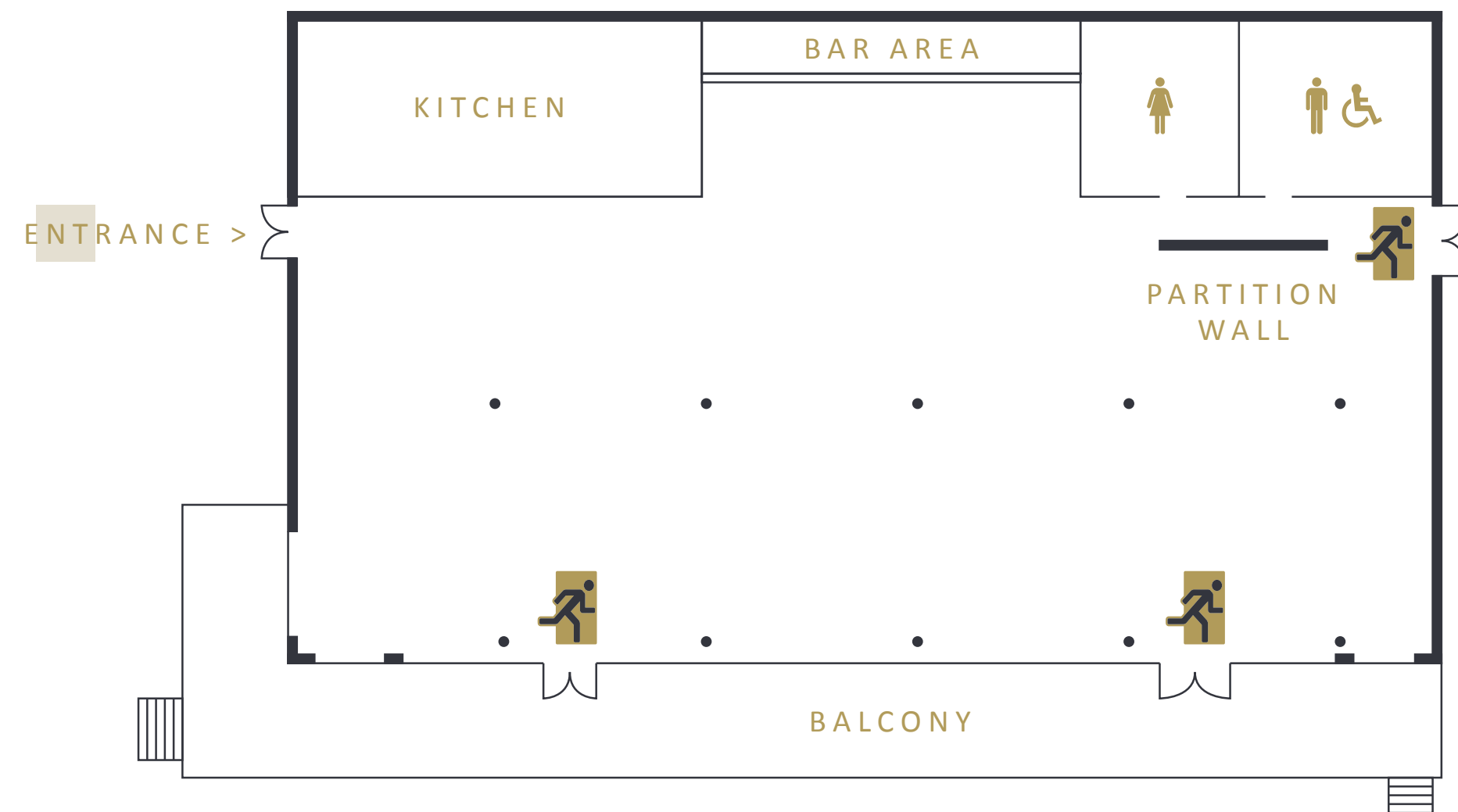
The information provided in this brochure gives a brief overview of the rooms available to hire for your event, but it is by no means exhaustive.

We pride ourselves on providing unique and bespoke events for our clients, and on being as flexible as possible, ensuring that all client needs are tailored to provide the highest quality experience for your guests. Our room capacities are detailed below.

SUITE NAME	FLOOR SPACE M ²	THEATRE	BANQUET	RECEPTION	CLASSROOM
Shortcross Gin Suite	610	500	500	500	400
Pravha Suite	306	200	200	200	140
Bushmills Bar	550	-	-	500	-
Trackside Marquee	450	300	300	300	240
Private Suites X3	56	40	40	40	40
Moscow Flyer Suite	161	130	100	140	-
Dark Horse Wine Bar	99	-	-	60	-
The Governors Stand	55	-	-	35	-
Owners & Trainers Suite	140	-	-	145	-

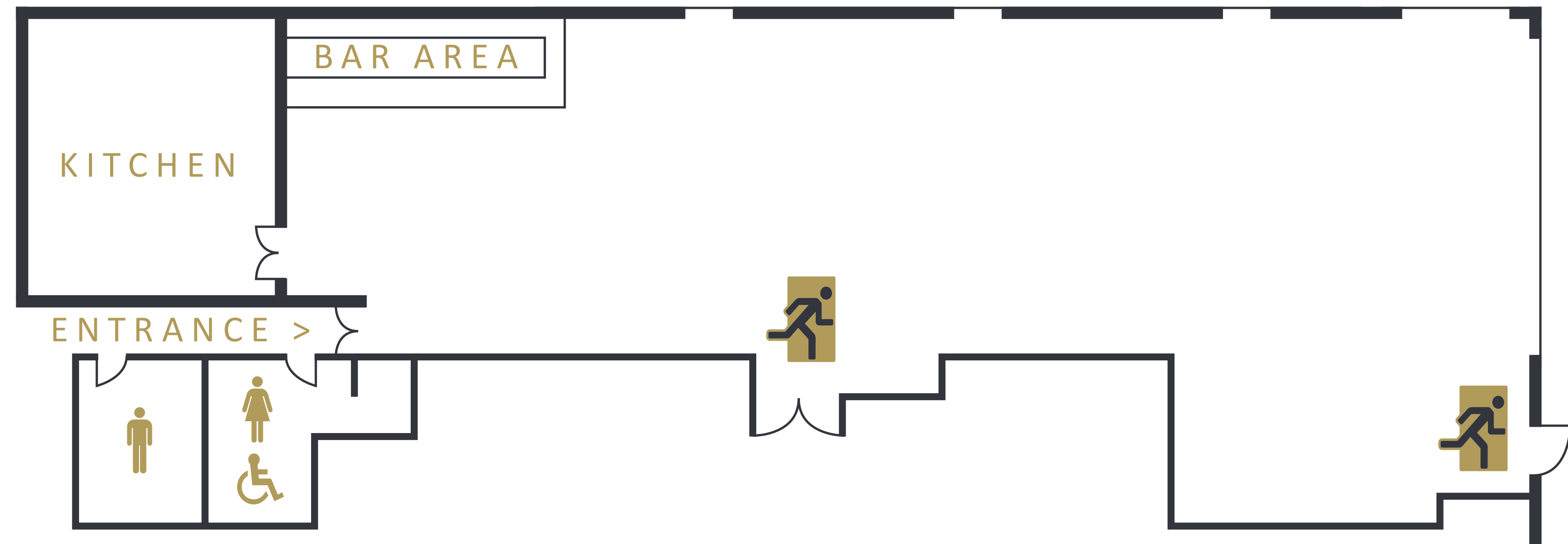
SHORTCROSS GIN SUITE

The 'Shortcross Gin' Suite is the jewel in Down Royal's crown. This superior suite is situated on the ground floor of the hospitality pavilion, which is entirely glass fronted, offering spectacular views of the racetrack and surrounding countryside. These views can also be enjoyed from the spacious outdoor balcony. This room is completely self-contained with its own fully equipped kitchen, bar area and toilets and has an integrated PA system.



PRAVHA SUITE

The Pravha suite is situated on the first floor of the Hospitality Pavilion with a large balcony overlooking the parade ring and the surrounding countryside. The suite holds up to 200 guests, equipped with flat screen CCTVs, PA system and a private pay bar.



ROOM DIMENSIONS:
34m x 9m
(l x w)

PRIVATE SUITES

ROOM DIMENSIONS
7.7m x 7.3m (l x w)

The Private Suites are situated on the first floor of the hospitality pavilion and available for daily use. All suites are glass fronted and have a private balcony overlooking the finishing straight and surrounding countryside. Each suite accommodates around 40 guests' banquet-style. These rooms are ideal for meetings, breakout sessions or private dining.



MOSCOW FLYER SUITE

ROOM DIMENSIONS:
23m x 7.4m (l x w)

Situated on the first floor in the original Grandstand building, the Moscow Flyer Suite provides a cosy and casual space for a more intimate function and holds up to 140 guests. Facilities within the suite include a private bar, toilets, flat screen TVs and a PA system.



TRACKSIDE MARQUEE

The Trackside marquee is in a prime position beside the winning post, offering close up views of the track and surrounding countryside. The suite holds up to 300 guests banquet style and is equipped with its own private pay bar and toilets.

MARQUEE DIMENSIONS: 30m x 15m (l x w)

GOVERNORS STAND

The Governor's Stand is a newly refurbished suite with stylish surroundings and views over the finishing straight via its private balcony. This suite is located on the first floor above the Dark Horse Wine Bar and holds up to 35 guests in a casual setting lending itself to a more intimate gathering.

ROOM DIMENSIONS: 11m x 5m (l x w)

DARK HORSE WINE BAR

The Dark Horse Wine Bar offers a premium wine menu in stylish surroundings with a dual aspect of views over the finishing straight and a balcony overlooking the Parade Ring. The bar holds up to 60 guests' casual style and is ideal for a drinks reception.

ROOM DIMENSIONS: 9m x 11m (l x w)

BUSHMILLS BAR

The Bushmills Bar is located on the ground floor of the Main Grandstand with direct access to the trackside. This bar holds up to 600 guests, has its own Private Pay Bar, Café Facilities and private bathrooms. The Bushmills Bar is perfect for hosting larger drinks receptions.

ROOM DIMENSIONS: 34m x 23m (l x w)

HOSPITALITY

Working with our catering partner, Craft Event Co and bar partner, Mount Charles, Down Royal Racecourse provides a top-quality, bespoke hospitality service that can be tailored to your needs.

Craft Event Co have developed versatile menus consisting of the finest local produce. They provide a memorable culinary experience with high quality food and service for all of your guests. You can choose from continental pastries to breakfast baps with tea and coffee to start your day or a selection of light bites over a working lunch. For your evening offering, a selection of delicious buffets or a themed three course meal will help to make a memorable event for your guests.



DOWN ROYAL SITE MAP

TURNSTILES

HOSPITALITY PAVILION

MAIN GRANDSTAND

MAIN OFFICE

TRACKSIDE MARQUEE

FINISH LINE

EMERGENCY EXIT

Information Desk	First Aid Room	Toilets
Parade Ring	ATM	Owners & Trainers Bar
Winners Enclosure	Taxi Rank	Welfare Office
Weigh Room	Parking	Dark Horse Wine Bar & Governors Stand
Picnic Area		

HOSPITALITY PAVILION
 -Shortcross Gin Suite
 -Pravha Suite
 -Private Suites

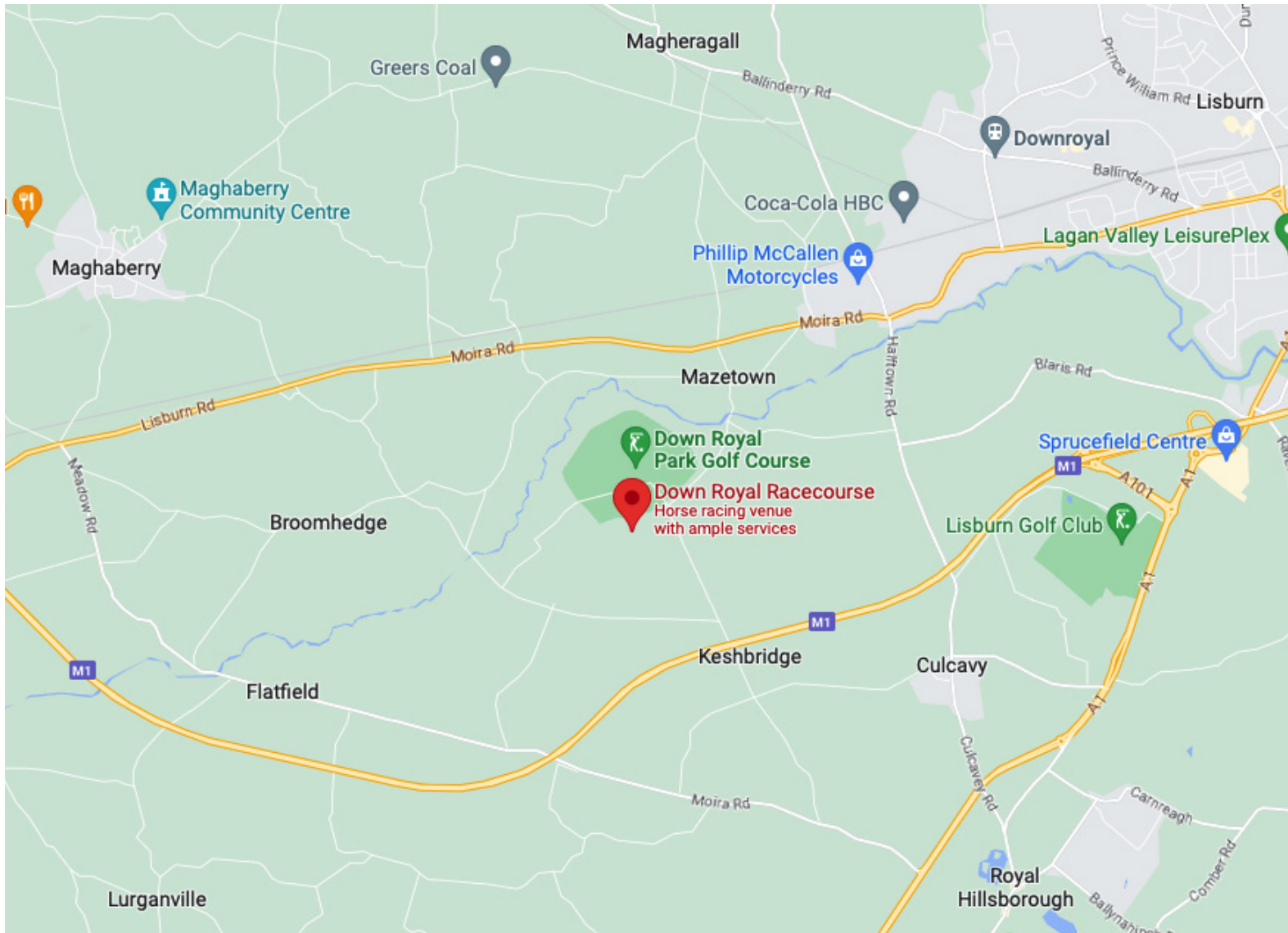
MAIN GRANDSTAND
 -Food and Beverage Facilities
 -Moscow Flyer Suite
 -Corporate Boxes

Down Royal Racecourse

LOCATION

Getting to Down Royal couldn't be easier; situated in the heart of the countryside the Racecourse is located just minutes from the M1 and A1 dual carriageway – main routes to Dublin and Belfast.

- 25 minutes from George Best City Airport
- 30 minutes from Belfast International Airport
- 20 minutes from Belfast City Centre
- 95 minutes from Dublin



TALK TO US

If you would like to find out more about Down Royal and how we can help you make your event one to remember, please contact our Events Team to discuss your requirements on

T: 00 44 (0) 28 9262 1256
E: info@downroyal.com
W: www.downroyal.com

Down Royal Racecourse
Maze, Lisburn
Co Down,
Northern Ireland
BT27 5RW

